



**VALVE THỊNH PHÁT**

**Nhà nhập khẩu :**

**CÔNG TY TNHH VAN CÔNG NGHIỆP THỊNH PHÁT**

128/3A Đường Cầu Kinh, Phường Tân Tạo A, Quận Bình Tân, TP.HCM, VN

Email : [valvethinhphat2023@gmail.com](mailto:valvethinhphat2023@gmail.com) Website : [vancongnghiepthinhphat.com](http://vancongnghiepthinhphat.com)

**Điện thoại : 0708 900 039 - 0898 49 1955**

**GPRO**  
GPRO VALVE SDN.BHD

**VALVE**  
MALAYSIA

**VAN CÔNG NGHIỆP & PHỤ KIỆN**

*Chất lượng tạo thương hiệu*



# VAN CỔNG CÓ ĐAI ỐC BẰNG ĐỒNG THAU



**Material of main parts**

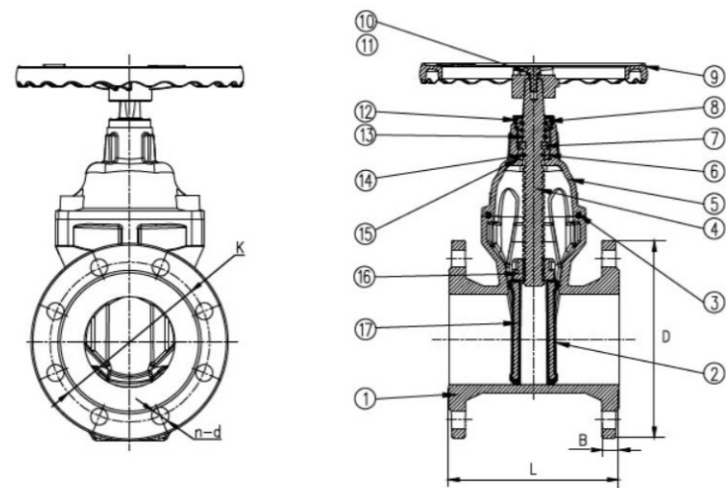
Part Name	Material
Body, Bonnet	Ductile iron
Disc	Ductile Iron with NBR / EPDM / FPM
Stem	Stainless Steel

**Standards**

Design and Manufacture	Face to Face	FlangeEnd	Inspection
BSS163	BSS163	EN92/ISO7005-2	BSS163/ISO 5208

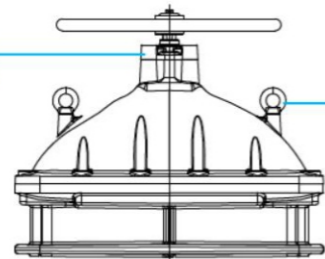
**Test**

Nominal Pressure	Shell Test	Seal Test
PN10 , PN16	1.5/2.4	1.1/1.76



17	Core	DUCTILE IRON
16	Stem Nut	CuZn39Pb1 Brass
15	O Ring	NBR
14	O Ring	NBR
13	O Ring	NBR
12	Dustcover	NBR
11	Flat washer	AISI304 STAINLESS STEEL
10	Bolt	AISI304 STAINLESS STEEL
9	Handwheel/Cap	DUCTILE IRON
8	Thrust Nut	CuZn39Pb1 Brass
7	Holding Ring	CuZn39Pb1 Brass
6	Thrust Washer	CuZn39Pb1 Brass
5	Bonnet	DUCTILE IRON
4	Stem	AISI420 STAINLESS STEEL
3	Bonnet Gasket	NBR
2	Disc	EPDM+DUCTILE IRON
1	Body	DUCTILE IRON

\* size above DN300 with gland on bonnet

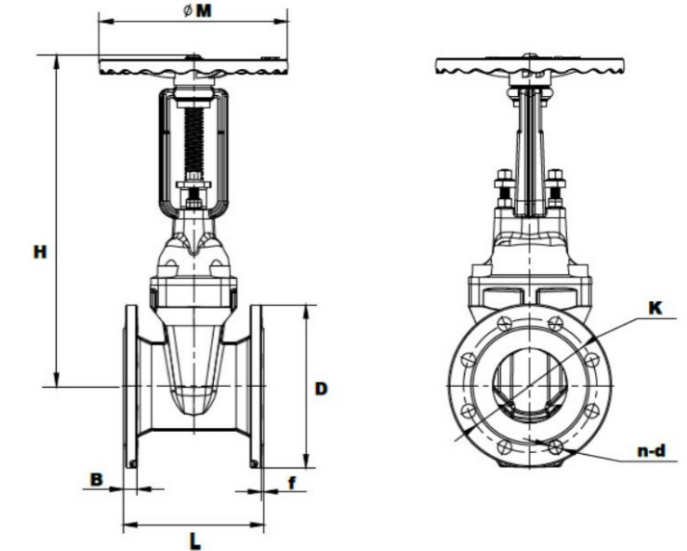


\* lifting ring from size DN200

**Dimensions**

DN	50	65	80	100	125	150	200	250	300	350	400	450	500	600
L	178	190	203	229	254	267	292	330	356	381	406	432	457	508
H	350	369	409	458	516	570	753	807	940	1002	1100	1210	1380	1455
D	165	185	200	220	250	285	340	405	460	520	580	640	715	840
D1	125	145	160	180	210	240	295	355	410	470	525	585	650	770

# VAN CỔNG ĐÀN HỒI OS & Y



**Material of main parts**

Part Name	Material
Body, Bonnet	Ductile Iron
Disc	Ductile Iron with NBR/EPDM
Stem	Stainless Steel

**Standards**

Design and Manufacture	Face to Face	FlangeEnd	Inspection
BSS163	BSS163	EN1092/ISO7005-2	BSS163/ISO 5208

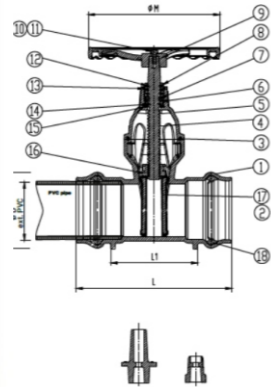
**Test**

Nominal Pressure	Shell Test	Seal Test
PN 10 , PN 16	1.5/2.4	1.1/1.76

**Dimensions**

DN	50	65	80	100	125	150	200	250	300	350	400	450	500	600
L	178	190	203	229	254	267	292	330	356	381	406	432	457	508
H	350	369	409	458	516	570	753	807	940	1002	1100	1210	1380	1455
D	165	185	200	220	250	285	340	405	480	520	580	640	715	840
D1	125	145	160	180	210	240	295	355	410	470	525	585	650	770

## Ổ CẮM CHO ỐNG NHỰA PVC



18	Rubber Gasket	NBR
17	Disc Core	DUCTILE IRON
16	Stem Nut	CuZn39Pb1 Brass
15	O Ring	NBR
14	O Ring	NBR
13	O Ring	NBR
12	O Ring	NBR
11	Flat Washer	AISI304 STAINLESS STEEL
10	Bolt	AISI304 STAINLESS STEEL
9	Handwheel/Cap	DUCTILE IRON
8	Thrust Nut	CuZn39Pb1 Brass
7	Holding Ring	CuZn39Pb1 Brass
6	Thrust Washer	CuZn39Pb1 Brass
5	Bonnet	DUCTILE IRON
4	Stem	AISI420 STAINLESS STEEL
3	Bonnet Gasket	NBR
2	Disc	EPDM+DUCTILE IRON
1	Body	DUCTILE IRON

### Material of main parts

Part Name	Material
Body, Bonnet	Ductile Iron
Disc	Ductile Iron with NBR/EPDM/FPM
Stem	Stainless Steel

### Test

Nominal Pressure	Shell Test	Seal Test
1.6	2.4	1.8

### Dimensions

DN	50	65	80	100	125	150	200	200	250	300
L	250	270	280	300	325	350	400	400	450	500
L <sub>1</sub>	77	80	84	88	91	94	100	100	125	140
D	63	75	90	110	140	160	200	225	250	315
H <sub>1</sub>	50	58	66	80	96	110	128	128	156	192

## VAN BƯỚM LOẠI TAY GẠT



### Material of main parts

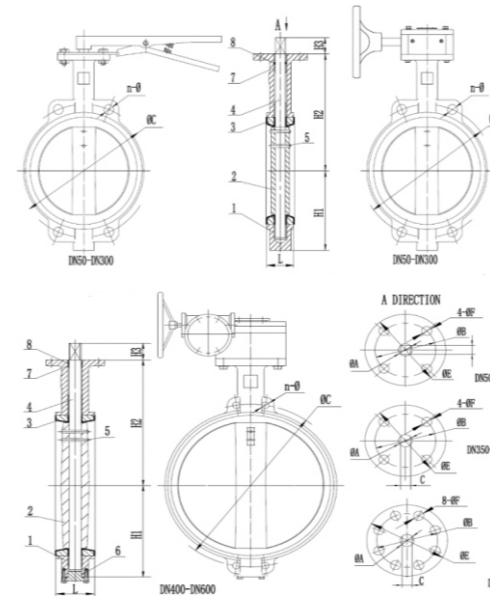
Part Name	Material
Body	Cast Iron, Ductile Iron
Disc	Ductile Iron, Stainless Steel
Stem	Stainless Steel
Seal Ring	EPDM, NBR, VITON, PTFE

### Standards

Face to Face	Connection End
ISO 5752 API609 DIN 3202	AS 2129 Table D/Table E. Bs 10 Table D/Table E DIN 2501 PN10/PN16, JIS 2220 5K/10K, BS 4504 PN10/PN16 ASME B16.1 Class 125 & ASME B16.42 Class 150 ISO 7005-2 PN10/PN16

### Test

Nominal Pressure	Shell Test	Seal Test
1.0/1.6	1.5/2.4	1.1/1.76



ITEM	PART NAME	MATERIAL
1	Body	DI
2	Disc	DI/CF8/CF8M/AL-BZ
3	Seat	EPDM/NBR/VITON/PTFE
4	Stem	SS416/SS431/SS304/17-4PH
5	Taper Pin	SS316
6	Cover	DI
7	Bushing	PTFE
8	O-ring	EPDM/NBR/VITON

### Dimensions

SIZE	DIM	A	B	L	øD1	øD3	H
DN40(1.5")		69	136	32	65	35.25	32
DN50(2")		80	161	42.04	65	35.25	32
DN65(2.5")		89	175	44.68	65	35.25	32
DN80(3")		95	181	45.21	65	35.25	32
DN100(4")		114	200	52.07	90	55.25	32
DN125(5")		127	213	54.36	90	55.25	32
DN150(6")		139	226	55.75	90	55.25	32
DN200(8")		175	260	60.58	125	70.25	40
DN250(10")		203	292	65.63	125	70.25	40
DN300(12")		242	337	76.9	125	70.25	40

## VAN BƯỚM ĐỒNG TÂM MẶT BÍCH ĐÔI



### Material of main parts

Part Name	Material
Body	Cast Iron, Ductile Iron
Disc	Ductile Iron, Stainless Steel
Stem	Stainless Steel
Seal	EPDM, NBR, VITON, PTFE

### Standards

DesignSTD	FlangeEnd	Test
GB12221-89 ANSI B16.1 JISB 2002	GB421.4-84 GB9113.3-88 ANSI B16.5 JISB 2212	API598

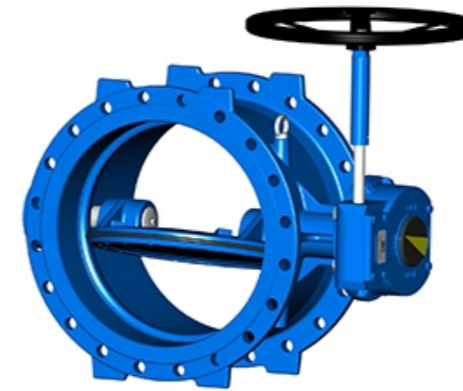
### Test

Nominal Diameter DN (mm)	Nominal Diameter PN (Mpa)	Test Pressure	
		1.5-2.4	1.1-1.76
DN50-DN1000	1.0~1.6, 150LB, 10K		

### Dimensions PN10/PN16

DN (mm)	Size (mm)													
	L	D				D1				b	Z-ød			
		1.0	1.6	150	10K	1.0	1.6	150	10K		1.0	1.6	150	10K
50	108	165	165	152	155	125	125	120.5	120	18	4-ø18	4-ø18	4-ø19	4-ø19
65	112	185	185	178	175	145	145	139.5	140	18	4-ø18	4-ø18	4-ø19	4-ø19
80	114	200	200	190	185	160	160	152.5	150	20	8-ø18	8-ø18	4-ø19	8-ø19
100	127	220	220	229	210	180	180	190.5	175	20	8-ø18	8-ø18	8-ø19	8-ø19
125	140	250	250	254	250	210	210	216	210	22	8-ø18	8-ø18	8-ø22	8-ø23
150	140	285	285	279	280	240	240	241.5	240	22	8-ø22	8-ø22	8-ø22	8-ø23
200	152	340	340	343	330	295	295	298.5	290	24	8-ø22	12-ø22	8-ø22	12-ø23
250	165	390	405	406	400	350	355	362	350	24	12-ø22	12-ø22	8-ø25	12-ø25
300	178	440	460	483	445	400	410	432	400	26	12-ø22	12-ø22	12-ø25	12-ø25
350	190	500	520	533	490	460	470	476	445	26	16-ø22	16-ø22	16-ø29	16-ø25
400	216	565	580	597	560	515	525	540	510	28	16-ø26	16-ø30	16-ø29	16-ø27
450	222	615	640	635	520	565	585	578	565	30	20-ø26	20-ø30	16-ø32	20-ø27
500	229	670	715	698	675	620	650	635	620	32	20-ø26	20-ø33	20-ø32	20-ø27
600	267	780	840	813	795	725	770	749.5	730	34	20-ø30	20-ø36	20-ø35	24-ø33
700	292	895	910			840	840			36	24-ø30	24-ø36		
800	318	1015	1025			950	950			36	24-ø30	24-ø39		
900	330	1115	1125			1050	1050			40	28-ø33	28-ø39		
1000	410	1230	1255			1160	1170			42	28-ø36	28-ø42		

## VAN BƯỚM LỆCH TÂM ĐÔI



### Material of main parts

Part Name	Material
Body	Cast Iron, Ductile Iron
Disc	Ductile Iron, Stainless Steel
Stem	Stainless Steel
Seal Ring	Stainless Steel / EPDM, PTFE
Disc Ring	EPDM, PTFE

### Standards

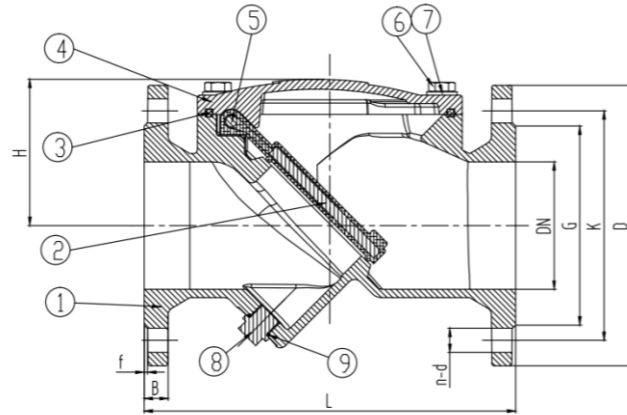
DesignSTD	Face to Face	FlangeEnd	Inspection
Bs 5155 AWWA C504	GB12221-89 ISO5752 BS EN558-1	DIN 2501 ISO7005-2 BS En1092	API 598

### Test

Nominal Pressure	Shell Test	Seal Test
1.0	1.5	1.1
1.6	2.4	1.76

SIZE	HA	HB	L	PN10			PN16		
				D	D1	n-d	D	D1	n-d
DN100	140	282	190	220	180	8-18	220	180	8-18
DN125	170	327	200	250	210	8-18	250	210	8-18
DN150	225.4	368	210	285	240	8-23	285	240	8-23
DN200	230	462	230	340	295	8-23	340	295	12-23
DN250	280	517	250	395	350	12-23	405	355	12-27
DN300	262	501	270	445	400	12-23	460	410	12-27
DN350	280	567	290	505	460	16-23	520	470	16-27
DN400	262	655	310	565	515	16-27	580	525	16-30
DN450	364	610	330	615	565	20-27	640	585	20-30
DN500	390	750	350	670	620	20-27	715	650	20-33
DN600	450	860	390	780	725	20-30	840	770	20-36
DN700	511	1014	430	895	840	24-30	910	840	24-36
DN800	575	1125	470	1015	950	24-33	1025	950	24-39
DN900	615	1235	510	1115	1050	28-33	1125	1050	28-39
DN1000	720	1418	550	1230	1180	28-36	1155	1170	28-42
DN1200	815	1650	630	1455	1380	32-39			
DN1400	972	2050	710	1675	1590	36-42			
DN1600	1130	2124	790	1915	1820	40-48			
DN1800	1323	2651	870	2115	2020	44-48			
DN2000	1503	2989	950	2325	2230	48-48			

## VAN MỘT CHIỀU CAO SU



### Material of main parts

Part Name	Material
Body, Bonnet	Cast Iron, Ductile Iron
Disc	Ductile Iron, Cast iron with Rubber Costing

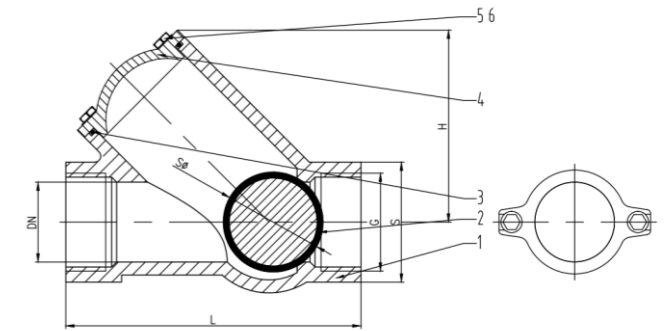
### Test

Nominal Pressure	Shell Test	Seal Test
1.00	1.5	1.10
1.60	2.4	1.75

### Dimensions

DN	2"	2-1/2"	3"	4"	5"	6"	8"	10"	12"
L	203	216	241	292	330	356	495	622	698
D	165	185	200	220	250	285	340	400	455
D1	125	145	160	180	210	240	295	355	410
D2	99	118	132	156	184	211	266	319	370
Z-d	4-ø19	4-ø19	8-ø19	8-ø19	8-ø19	8-ø23	12-ø23	12-ø28	12-ø28

## VAN MỘT CHIỀU BI NỔ REN



### DESCRIPTION

- Working pressure : 1.0Mpa/1.6Mpa
- Working temperature :  
NBR : 0°C ~ +80°C  
EPDM : -10°C ~ +120°C
- Connection type : BSP or BSPT
- Testing : DIN3230, API598
- Testing : DIN3230, API598
- Medium : Fresh Water, Sea water, food stuff, all kinds of oil, acid alkaine liquid etc.

NO	PART	Material
1	Body	GG25/GGG40
2	Gasket	NBR/EPDM
3	Cap	GG25/GGG40
4	Ball	NBR/EPDM
5	Bolt	Stainless Steel
6	Nut	Stainless Steel

NO(mm)	25	32	40	50	65	80
L(mm)	125	132	145	174	200	243
H(mm)	75	75	85	126	113	165

## VAN XẢ KHÍ ĐƠN ORIFICE



### Material of main parts

Part Name	Material
Body, Bonnet	Ductile Iron, Cast Iron
Ball	ABS / Rubber

### Test

Nominal Pressure	Shell Test	Seal Test
1.00	1.5	1.10
1.60	2.4	1.76

### Dimensions

DN	1/2" - 3/4"	1" - 1 1/4"	1 1/2" - 2"
D	88	105	128
H	120	145	172

## VAN MỘT CHIỀU BI MẶT BÍCH

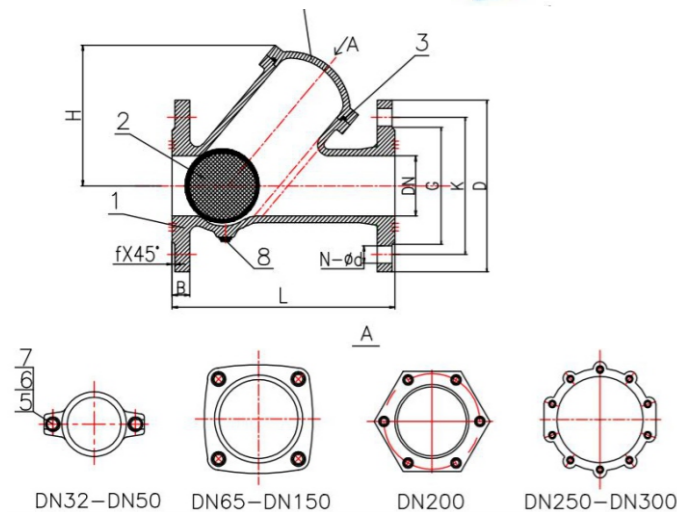


### Technical requirement

- 1.Face to face dimension of DIN 3202 -F6;
- 2.Flange drilled conforms to EN1092-2;

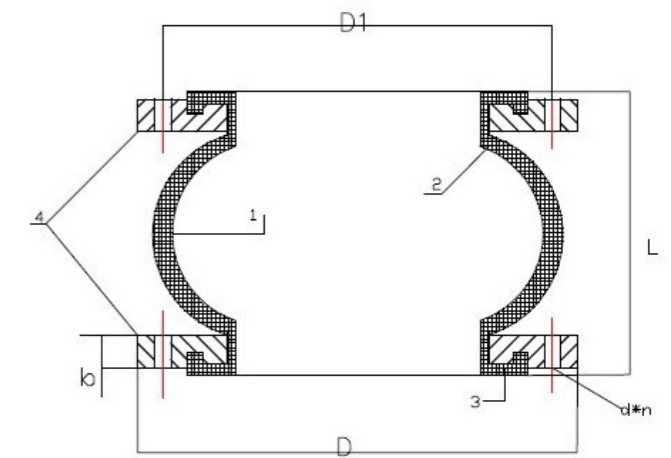
Nominal pressure	1.0MPa	1.6MPa
Suitable medium	water	
test pressure	shell	15.0Bar/24.0Bar
	seat	11.0Bar/17.6Bar
test time	DN50-150	60s
	DN>150	120s
Working temperature	-20~80°C	

NO.	Name	QTY	Material
8	Plug	1	A2-70/SS304
7	NUT	-	A2-70
6	SCREW	-	A2-70
5	GASKET	-	A2-70
4	COVER	1	GGG50
3	O RING	1	NBR
2	BALL	1	GGG50+EPDM
1	BODY	1	GGG50



DN	L	D	K		G		N-ød		B	f	H
			PN10	PN16	PN10	PN16	PN10	PN16			
32	180	140	100	100	78	78	4-ø19	4-ø19	19	3	102
40	180	150	110	110	88	88	4-ø19	4-ø19	19	3	102
50	200	165	125	125	100	100	4-ø19	4-ø19	19	3	116
65	240	185	145	145	120	120	4-ø19	4-ø19	19	3	151
80	260	200	160	160	135	135	8-ø19	8-ø19	19	3	169
100	300	220	180	180	156	156	8-ø19	8-ø19	19	3	196
125	350	250	210	210	186	186	8-ø19	8-ø19	19	3	228
150	400	285	240	240	212	212	8-ø23	8-ø23	19	3	262
200	500	340	295	295	268	268	8-ø23	12-ø23	20	3	354
250	600	405	350	355	318	318	12-ø23	12-ø28	22	3	460
300	700	460	400	410	370	373	12-ø23	12-ø28	24.5	3	528

## KHỚP NỐI MỀM CAO SU



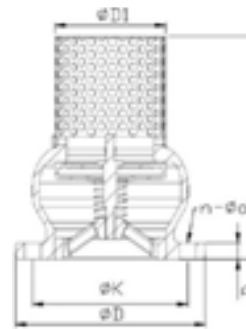
### Ruber Joint

NO.	NAME	MATERIAL
1	Rubber	EPDM
2	The main body skeleton	Nylon cord fabric
3	Pressurized ring	Steel wire rope
4	Flange	Q235

### Flange data

Size	D	D1	d*n	b	L
DN40 PN16	138mm	110mm	18mm*4	14mm	95mm
DN50 PN16	153mm	125mm	18mm*4	14mm	105mm
DN65 PN16	173mm	145mm	18mm*4	16mm	115mm
DN80 PN16	188mm	160mm	18mm*8	16mm	135mm
DN100 PN16	210mm	180mm	18mm*8	16mm	150mm
DN125 PN16	238mm	210mm	18mm*8	17mm	165mm
DN150 PN16	277mm	240mm	22mm*8	18mm	180mm
DN200 PN16	332mm	295mm	23mm*12	19mm	210mm
DN250 PN16	396mm	355mm	26mm*12	22mm	230mm
DN300 PN16	450mm	410mm	26mm*12	22mm	245mm
DN350 PN16	515mm	470mm	26mm*16	23mm	255mm
DN400 PN16	575mm	525mm	30mm*16	26mm	255mm

## VAN CHÂN



### Product Overview

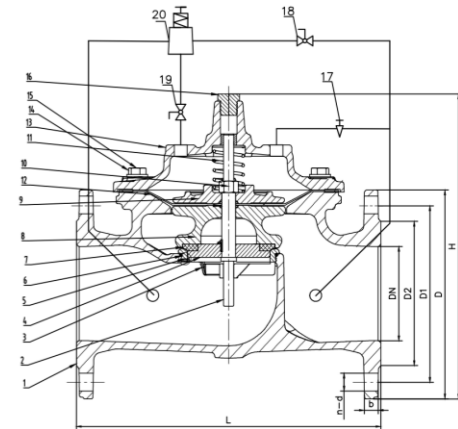
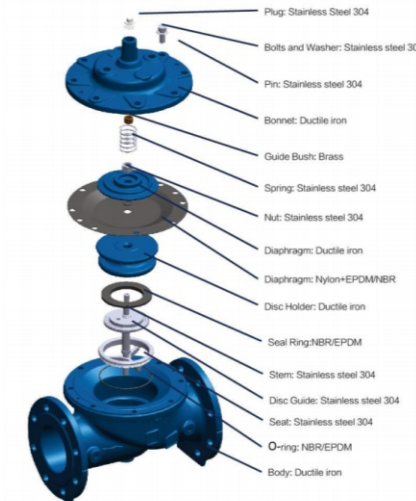
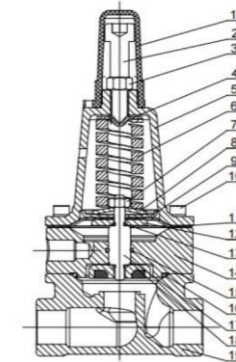
The bottom valve is composed of the valve body, valve flap, sealing ring and gasket. The valve flap of the bottom valve has several types such as single valve. After the bottom valve is connected to the pipeline, the liquid medium enters the valve body from the direction of the bottom valve. The pressure of the liquid acts on the valve flap, so that the valve flap is opened to allow the medium to flow. Turn off to prevent backflow of media.

### Material of main parts

NO.	Name	Material
1	Body	GGG50
2	Base	GGG50
3	Spring	SS304
4	Stem	2Cr13
5	Disc	GGG50 + EPDM
6	Solt	SS304
7	Sceem	SS304

DN	D	D1	K		H	B	N-øD	
			PN10	PN16			PN10	PN16
50	165	99	125		190	19	4-ø19	
65	185	118	145		210	19	4-ø19	
80	200	132	160		240	19	4-ø19	
100	220	156	180		250	19	8-ø19	
125	250	184	210		310	19	8-ø19	
150	285	211	240		370	19	8-ø23	
200	340	266	295		450	20	8-ø23	12-ø23
250	405	319	350	355	470	22	12-ø23	12-ø28
300	460	378	400	410	500	25	12-ø23	12-ø28

## VAN AN TOÀN

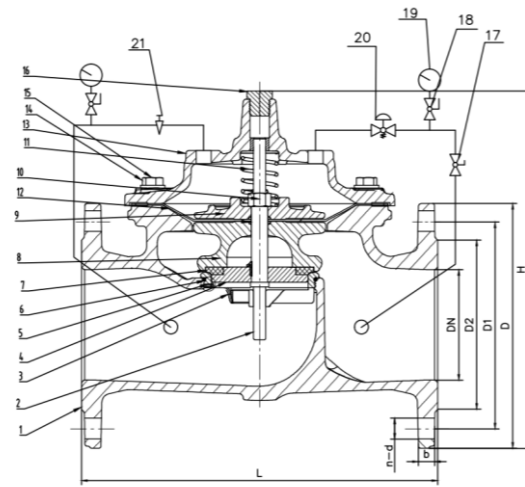
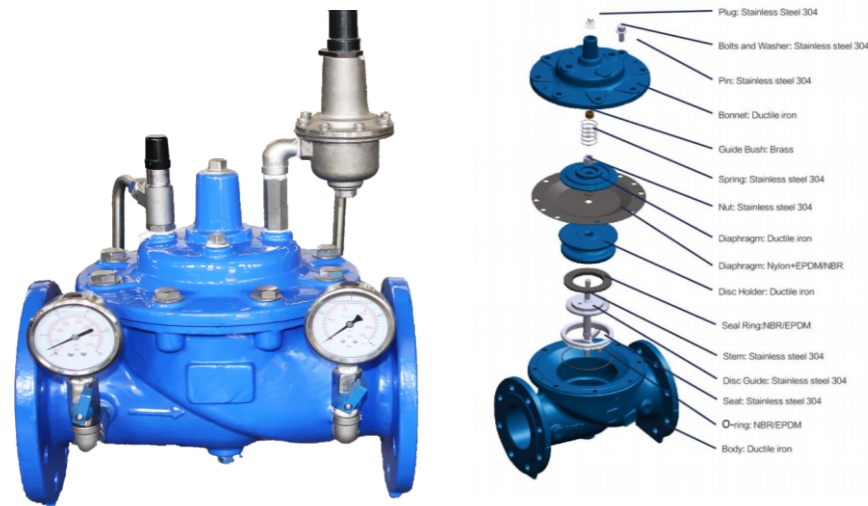


No.	Parts name	Material	Standard
1	Cap	Plastic	ABS
2	Adjusting screw	Stainless steel	AISI 304
3	Jam nut	Stainless steel	AISI 304
4	Spring Table	Stainless steel	AISI 304
5	Bonnet	Stainless steel	AISI 304
6	Spring	Spring Steel	SiCrV
7	Nut	Stainless Steel	A2
8	Spring table	Spring steel	Min-steel+Ni Plated
9	Fixing Holder	Stainless steel	AISI 304
10	Screw	Stainless Steel	A2
11	Diaphragm	Nylon Reinforced Rubber	EPDM-Nylon
12	Gasket	Stainless Steel	AISI 304
13	O-Ring	Rubber	NBR
14	Internal Body	Stainless Steel	AISI 304
15	O-Ring	Rubber	NBR
16	O-Ring	Rubber	NBR
17	Stem	Stainless Steel	AISI 304
18	Disc	Stainless Steel+Rubber	AISI 304+EPDM
19	Body	Stainless Steel	AISI 304

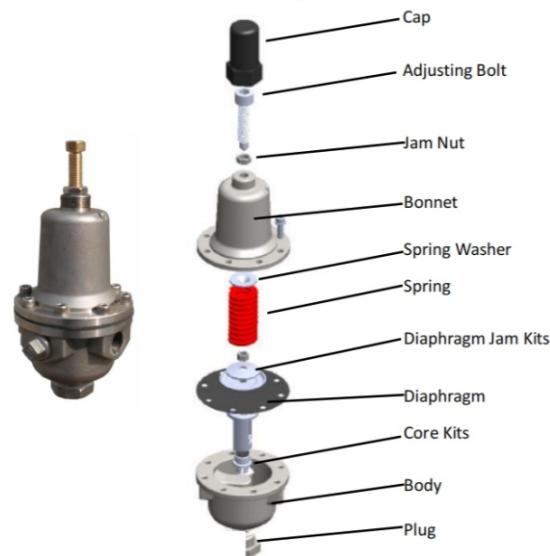
20	Guide Valve	STAINLESS STEEL
19	Ball Valve	STAINLESS STEEL
18	Ball Valve	STAINLESS STEEL
17	Needle Valve	STAINLESS STEEL
16	Plug	CF8
15	Bolt	AISI304 STAINLESS STEEL
14	Nut	AISI304 STAINLESS STEEL
13	Bonnet	DUCTILE IRON
12	Diaphragm	EPDM
11	Spring	AISI304 STAINLESS STEEL
10	Nut	AISI304 STAINLESS STEEL
9	Diaphragm Pressing Sleeve	DUCTILE IRON
8	Valve Disk	DUCTILE IRON
7	Sealing Ring	EPDM
6	O Ring	NBR
5	O Ring	NBR
4	Pressing Plate	CARBON STEEL
3	Seat	CF8
2	Stem	AISI304 STAINLESS STEEL
1	Body	DUCTILE IRON
No.	Name	Materials

DN	OUTLINE mm	END FLANGE EN1092-2 PN10mm						END FLANGE EN1092-2 PN16 mm						H
		L	D	D1	D2	n-d	B	f	D	D1	D2	n-d	B	
50	230	165	125	99	4-ø19	19	3	165	125	99	4-ø19	19	3	240
65	290	185	145	118	4-ø19	19	3	185	145	118	4-ø19	19	3	285
80	310	200	160	132	8-ø19	19	3	200	160	132	8-ø19	19	3	310
100	350	220	180	156	8-ø19	19	3	220	180	156	8-ø19	19	3	345
125	350	250	210	184	8-ø19	19	3	250	210	184	8-ø19	19	3	350
150	480	285	240	211	8-ø23	19	3	285	240	211	8-ø23	19	3	480
200	600	340	295	266	8-ø23	20	3	340	295	266	12-ø23	20	3	600
250	730	395	350	319	12-ø23	22	3	405	355	319	12-ø28	22	3	700
300	850	445	400	370	12-ø23	25	4	460	410	370	12-ø28	25	4	780
350	850	505	460	429	16-ø23	25	4	520	470	429	16-ø28	27	4	810
400	1100	565	515	480	16-ø28	25	4	580	525	480	16-ø31	28	4	940
500	1250	670	620	582	20-ø28	27	4	715	650	609	20-ø34	32	4	1100
600	1450	780	725	682	20-ø31	30	4	840	770	720	20-ø37	36	4	1290

**VAN GIẢM ÁP**



21	Needle Valve	STAINLESS STEEL
20	Guide Valve	STAINLESS STEEL
19	Pressure Gage	MOLECTRON
18	Ball Valve	STAINLESS STEEL
17	Ball Valve	STAINLESS STEEL
16	Plug	CF8
15	Bolt	AISI304 STAINLESS STEEL
14	Nut	AISI304 STAINLESS STEEL
13	Bonnet	DUCTILE IRON
12	Diaphragm	EPDM
11	Spring	AISI304 STAINLESS STEEL
10	Nut	AISI304 STAINLESS STEEL
9	Diaphragm Pressing Sleeve	DUCTILE IRON
8	Valve Disk	DUCTILE IRON
7	Sealing Ring	EPDM
6	O Ring	NBR
5	O Ring	NBR
4	Pressing Plate	CARBON STEEL
3	Seat	CF8
2	Stem	AISI304 STAINLESS STEEL
1	Body	DUCTILE IRON
No.	Name	Materials

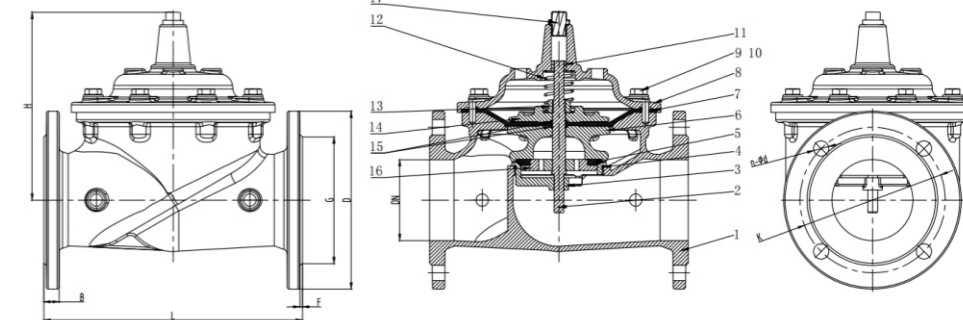
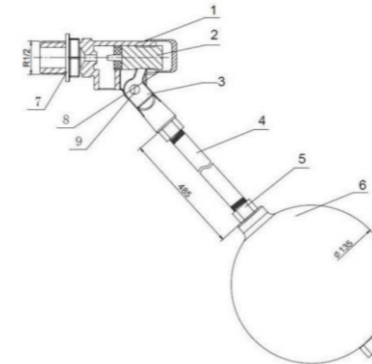


DN	OUTLINE mm	END FLANGE EN1092-2 PN10mm						END FLANGE EN1092-2 PN16 mm						H
		L	D	D1	D2	n-d	B	f	D	D1	D2	n-d	B	
50	230	165	125	99	4-Ø19	19	3	165	125	99	4-Ø19	19	3	240
65	290	185	145	118	4-Ø19	19	3	185	145	118	4-Ø19	19	3	285
80	310	200	160	132	8-Ø19	19	3	200	160	132	8-Ø19	19	3	310
100	350	220	180	156	8-Ø19	19	3	220	180	156	8-Ø19	19	3	345
125	350	220	180	156	8-Ø19	19	3	250	210	184	8-Ø19	19	3	350
150	480	285	240	211	8-Ø23	19	3	285	240	211	8-Ø23	19	3	480
200	600	340	295	266	8-Ø23	20	3	340	295	266	12-Ø23	20	3	600
250	730	395	350	319	12-Ø23	22	3	405	355	319	12-Ø28	22	3	700
300	850	445	400	370	12-Ø23	25	4	460	410	370	12-Ø28	25	4	780
350	850	505	460	429	16-Ø23	25	4	520	470	429	16-Ø28	27	4	810
400	1100	565	515	480	16-Ø28	25	4	580	525	480	16-Ø31	28	4	940
500	1250	670	620	582	20-Ø28	27	4	715	650	609	20-Ø34	32	4	1100
600	1450	780	725	682	20-Ø31	30	4	840	770	720	20-Ø37	36	4	1290

**VAN ĐIỀU KHIỂN PHAO**



Connection	Flanged EN1092-2
Design standard	EN 1074 , EN 1171 and EN558-1.
Face to Face length	EN558-1
Flange dimension	EN1092-2 ISO7005-2 ANSI / JIS / AS2129
Temperature range	0 ~ 80°C
Medium	Water(Potable water)
Corrosion protection	WRAS epoxy powder coating



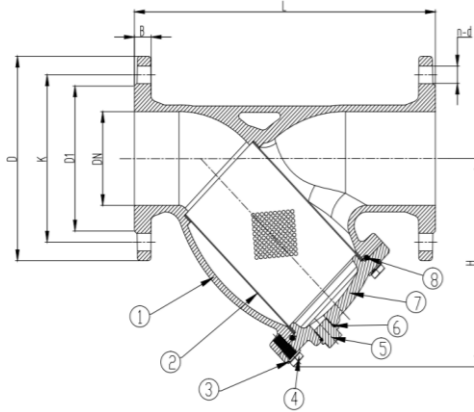
Item	Part name	Material	Standard
1	Body	Stainless Steel	AISI 304
2	Disc	Stainless Steel+Rubber	AISI304 +EPDM
3	Yoke	Stainless Steel	AISI 304
4	Rod	Stainless Steel	AISI 304
5	Nut	Stainless Steel	AISI 304
6	Float	Stainless Steel	AISI 304
7	Jam Nut	Stainless Steel	A2
8	Bonnet	Stainless Steel	A2
9	Screw	Stainless Steel	A2

17	Plug	AISI304 STAINLESS STEEL
16	Lower Platen	AISI304 STAINLESS STEEL
15	O Ring	NBR
14	Top Board	DUCTILE IRON
13	Check Nut	AISI304 STAINLESS STEEL
12	Spring	AISI304 STAINLESS STEEL
11	Guide Bush	CuZn39Pb1 Brass
10	Plain Washer	AISI304 STAINLESS STEEL
9	Bolt	AISI304 STAINLESS STEEL
8	Bonnet	DUCTILE IRON
7	Diaphragm	NBR
6	Mounting Plate	DUCTILE IRON
5	Sealing Gasket	NBR
4	O Ring	NBR
3	Seat	AISI304 STAINLESS STEEL
2	Stem	AISI304 STAINLESS STEEL
1	Body	DUCTILE IRON
No.	Name	Materials

DN	L	D	K	G	n-d	B	F	H
50	230	165	125	99	4-Ø19	19	3	150
65	290	185	145	118	4-Ø19	19	3	175
80	310	200	160	132	8-Ø19	19	3	215
100	350	220	180	156	8-Ø19	19	3	220
125	350	250	210	184	8-Ø19	19	3	220
150	480	285	240	211	8-Ø23	19	3	335
200	600	340	295	266	12-Ø23	20	3	415
250	730	405	355	319	12-Ø28	22	3	500
300	850	460	410	370	12-Ø28	24.5	4	550



## BỘ LỌC KIỂU CHỮ Y



No.	Name	Materials
8	O Ring	NBR
7	Bonnet	DUCTILE IRON
6	O Ring	NBR
5	Plug	AISI304 STAINLESS STEEL
4	Bolt	AISI304 STAINLESS STEEL
3	Flat Washer	AISI304 STAINLESS STEEL
2	Screen	AISI304 STAINLESS STEEL
1	Body	DUCTILE IRON

### Material of main parts

Part Name	Material
Body, Bonnet	Cast Iron or Ductile Iron
Screen	Stainless steel

### Standards

Face to Face	FlangeEnd
BS 2080	BS 4504

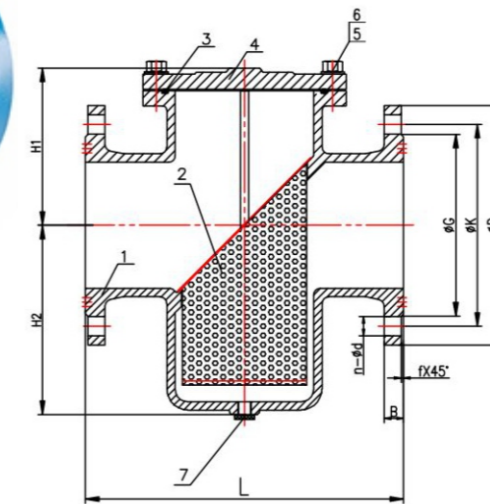
### Test

Nominal Pressure	Shell Test	Seal Test
PN 10 , PN 16	1.5/2.4	1.1/1.76

### Dimensions

DN	50	65	80	100	125	150	200	250	300
L	220	270	290	350	390	440	540	660	720
H	120	140	170	220	260	330	360	440	525
D	165	185	200	220	250	285	340	405	460

## BỘ LỌC GIỎ



### Standards

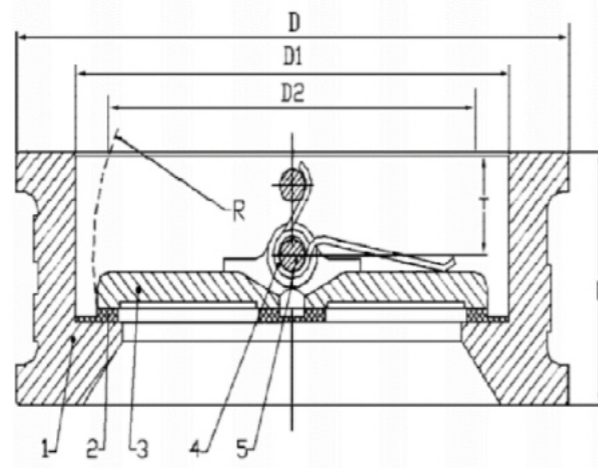
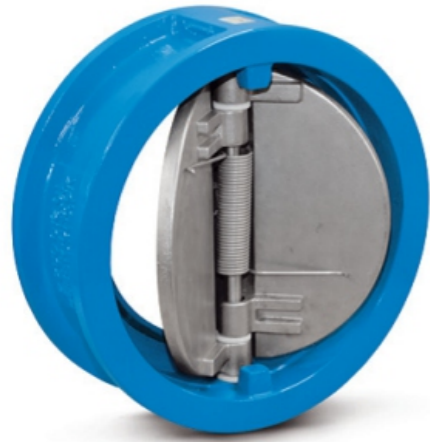
- 1,Face to Face according to ANSI B16.10
- 2,Flange drilled is according to EN1092-2.

Nominal pressure	1.0MPa	1.6MPa
Suitable medium	water	
test pressure shell	15.0Bar/24.0Bar	
test time	DN50-150 DN>150	60s 120s
Working temperature	-20~+80°C	

NO.	Name	QTY	Material
7	Plug	1	SS304
6	Gasket	-	SS201
5	Bolt	-	SS201
4	Cover	1	GGG50
3	O RING	1	NBR
2	Screen	1	SS304
1	Body	1	GGG50

DN <sup>+1.5</sup> <sub>-1.5</sub>	L <sup>+3</sup> <sub>-3</sub>	D <sup>+3</sup> <sub>-3</sub>	K <sup>+1.5</sup> <sub>-1.5</sub>		G <sup>+2</sup> <sub>-2</sub>		B <sup>+2.5</sup> <sub>-2.5</sub>	f	n-ød <sup>+1.5</sup> <sub>-1.5</sub>		H1 <sup>+20</sup> <sub>-20</sub>	H2 <sup>+20</sup> <sub>-20</sub>
			PN10	PN16	PN10	PN16			PN10	PN16		
40	207	150	110	110	88	88	19	3	4-ø19	4-ø19	114	98
50	207	165	125	125	100	100	19	3	4-ø19	4-ø19	114	98
65	210	185	145	145	120	120	19	3	4-ø19	4-ø19	129	112
80	251	200	160	160	135	135	19	3	8-ø19	8-ø19	142	125
100	292	220	180	180	156	156	19	3	8-ø19	8-ø19	165	160
125	334	250	210	210	186	186	19	3	8-ø19	8-ø19	173	185
150	378	285	240	240	212	212	19	3	8-ø23	8-ø23	165	235
200	475	340	295	295	268	268	20	3	8-ø23	12-ø23	215	295
250	511	405	350	355	318	318	22	3	12-ø23	12-ø28	250	340
300	667	460	400	410	370	373	24.5	3	12-ø23	12-ø28	283	423
350	769	520	460	470	430	433	26.5	3	16-ø23	16-ø28	345	540
400	842	580	515	525	480	483	28	4	16-ø28	16-ø31	390	590
450	890	640	565	585	528	546	30	4	20-ø28	20-ø31	402	618
500	900	715	620	650	582	605	31.5	4	20-ø28	20-ø34	441	696
600	1000	840	725	770	680	710	36	5	20-ø30	20-ø37	523	834

## VAN KIỂM TRA WAFER



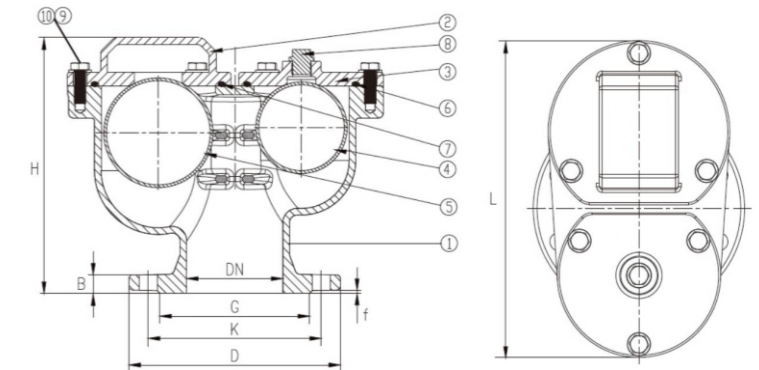
### DESCRIPTION

- Working pressure : 1.0Mpa/1.6Mpa/2.5Mpa
- Working temperature :  
NBR : 0°C ~ +80°C  
EPDM : -10°C ~ +120°C  
VITON : -20°C ~ +180°C
- Face to face according to DIN3202K3 ANSI125/150
- Flange according to EN1092-2ANSI125/150 etc.
- Testing DIN3230, API598.
- Medium : Fresh Water, Sea water, food stuff, all kinds of oil, acid alkaine liquid etc.

NO	PART	Material
1	Body	GG25/GGG40/SS304/SS316
2	Spring	Stainless steel
3	Disc	SS316/SS304/WCB/C954
4	Ring	Steel
5	Seat Ring	NBR/EPDM/VITON
6	Shaft-1	SS316/SS304
7	Shaft-2	SS316/SS304
8	Gasket-1	PTFE
9	Gasket-2	NBR
10	Screw	Steel

NO(mm)	40	50	65	80	100	125	150	200	250	300	350	400	450	500	600	700
L(mm)	43	46	46	64	64	70	76	89	114	114	127	140	152	154	178	229
D(mm)	65	65	80	94	117	145	170	224	265	312	360	410	450	500	624	720
Ø (mm)	PN10	92	107	127	142	162	192	218	273	328	378	438	489	532	585	690
	PN16	92	107	127	142	162	192	218	273	329	384	446	491	550	610	720

## VAN XẢ KHÍ BẦU ĐÔI



### Material of main parts

Part Name	Material
Body, Bonnet	Cast Iron, Cast Iron
Ball Float	ABS / Rubber

### Test

Nominal Pressure	Shell Test	Seal Test
1.0	1.5	1.10
1.6	2.4	1.76

### Dimensions

DN	50	65	80	100	150
L	240	256	305	328	392
D	165	185	200	220	285
D1	125	145	160	180	240
D2	99	118	132	156	211
H	211	211	261	269	320
Z-d	4-ø19	4-ø19	8-ø19	8-ø19	8-ø123

no.	part name	material
10	Washer	AISI304 STAINLESS STEEL
9	Bolt	AISI304 STAINLESS STEEL
8	Exhaust Nut	AISI304 STAINLESS STEEL
7	O Ring	NBR
6	O Ring	NBR
5	Floating Ball	NBR/EPDM+WOOD
4	Floating Ball	NBR/EPDM+WOOD
3	Exhaust Cover	DUCTILE IRON
2	Bonnet	DUCTILE IRON
1	Body	DUCTILE IRON